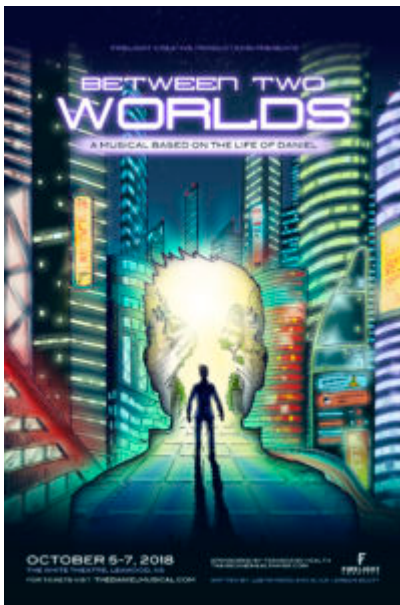


White Theatre hosts premiere, 'Between Two Worlds'



Justin Rizzo

ORIGINAL MUSICAL PRODUCTION

BETWEEN TWO WORLDS

TO DEBUT AT THE WHITE THEATER

WHEN WORLDS DIVERGE, EACH OF US HAS A CHOICE TO MAKE.

The newest spin on the biblical account of Daniel will debut at the White Theater in Kansas City on October 5.

Between Two Worlds was co-written and co-produced by Justin Rizzo, the founder of Firelight Creative Productions. This is the third musical script co-written by the long-time worship

leader and recording artist as well as his third original score. Rizzo's first musical, *From Patmos*, debuted in April 2010, with thousands watching live and thousands more via web stream.

Joining Rizzo as co-writer, co-producer, and director, is accomplished theatre veteran, Alice Larson Scott. Scott studied theatre at William Woods University and has been a part of over 100 productions in roles ranging from actor, choreographer, and writer, to producer and director.

This is the second collaboration by Rizzo and Scott, the first being *As in the Days of Noah*, which was performed at the old Youthfront Auditorium in downtown Kansas City in 2013. The soundtracks for both *As in the Days of Noah* and *From Patmos* are available for streaming on Spotify and Apple Music.

Between Two Worlds highlights the relevance of the life of Daniel today with its message of forgiveness and hope in the midst of devastation. The show follows the life of Daniel as he is tossed about by trouble and conflict while enslaved in the foreign nation of Babylon. His story illustrates the longings of the human heart as he wrestles with discovering the purpose of his life and navigates the struggles and tensions that touch every generation.

"Our hope is that each person who sees the show will be able to relate to Daniel and the trials he was faced with," Rizzo says. "We want audiences to walk away impacted by the way Daniel's story is relevant to their own lives."

Between Two Worlds stars Michael Maher as Daniel and Korrie Murphy as Lydia, alongside a robust cast of 23 vocal gems. With over 20 years of experience in music, Maher is making his theatrical debut in *Between Two Worlds*. Murphy is a theatre veteran, having been cast in over 20 shows, the latest of which was *The Unsinkable Molly Brown*.

Other cast notables include Juel Perry, Brandon Lautzenheiser, Jonathan Rizzo, and Madeline Clem. Perry and Lautzenheiser have played leading roles in dozens of musicals and both majored in voice and theatre at their respective universities. Jon Rizzo brings rock solid vocals and acting to the ensemble, as does Clem, another veteran of the theatre.

Between Two Worlds will be performed at The White Theatre in Leawood, Kansas. Opening night is Friday, October 5 at 7:00pm and shows will commence at 2:00pm and 7:00pm on Saturday and Sunday, October 6 and 7.

Tickets range from \$22 to \$27 and may be purchased online at thedanielmusical.com.

About Firelight Creative and Justin Rizzo

Justin Rizzo grew up in Buffalo, New York and has been involved with music since the age of 12. A vocational worship leader, he has written and recorded songs that have traveled around the globe. In 2018, Rizzo founded Firelight Creative Productions, a non-profit organization with a passion for creating truth-centered art to inspire, challenge, and encourage through musicals, films, music, and live productions. For more information visit justinrizzo.com and firelightcreativeproductions.com

Between Two Worlds: A Musical Based on the Life of Daniel

October 5, 7pm

October 6-7, 2pm and 7pm

The White Theater

Tickets: \$27, \$25, \$22

Purchase at thedanielmusical.com